

Open Development Tool Application Deployment in
Weblogic
Oracle FLEXCUBE Universal Banking
Release 14.3.0.0.0
[May] [2019]

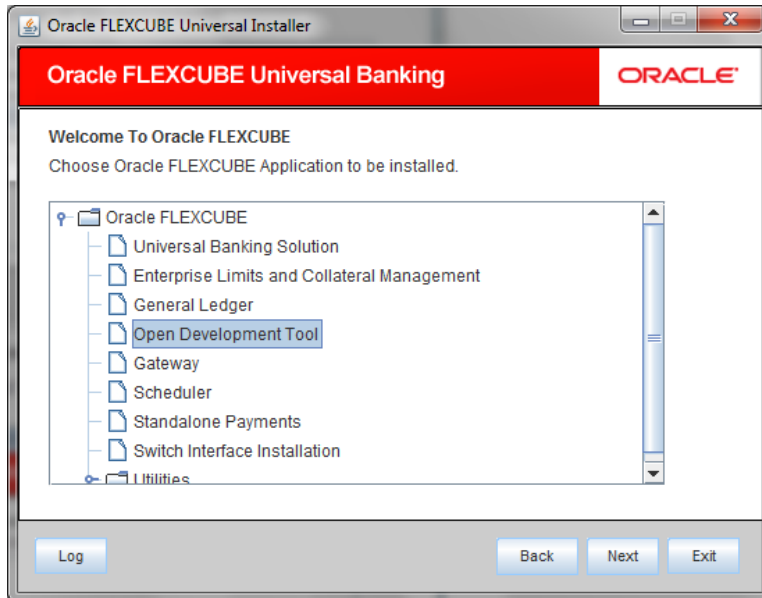


Table of Contents

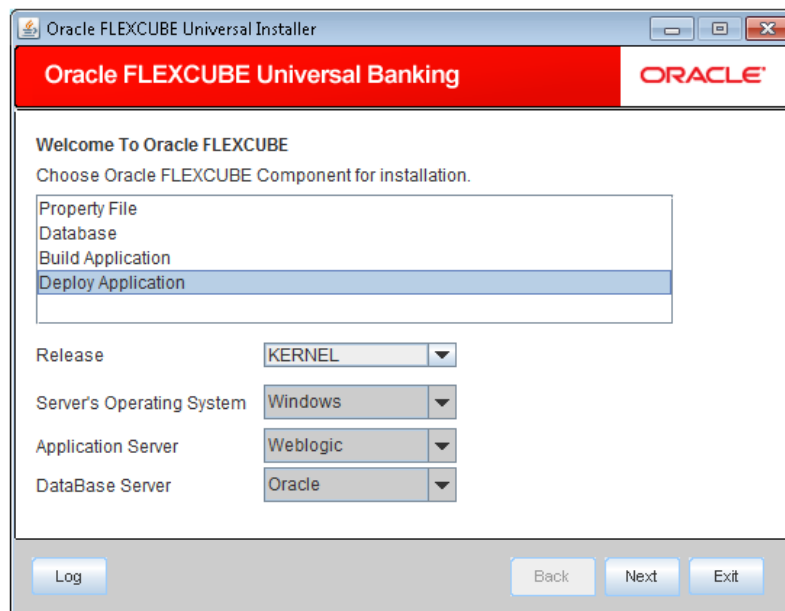
1. OPEN DEVELOPMENT TOOL (ODT) APPLICATION FULL DEPLOYMENT	1-1
--	-----

1. Open development Tool (ODT) Application Full Deployment

1. Launch Oracle FLEXCUBE Universal Banking Solution Installer.
2. Click on 'Next' to display the screen below.



3. Select 'Open Development Tool'.
4. Click 'Next' to display the screen below.



5. Select 'Deploy Application'.

Release

Select the release in which you are installing the FCUBS application. Select the appropriate one from the adjoining drop-down list.

Server's Operating System

Select the server's operating system in which you are installing the FCUBS application. Select the appropriate one from the adjoining drop-down list.

Application Server

Select 'Weblogic' from the adjoining drop down list.

Database Server

Select the database server in which you are installing the FCUBS application. Select the appropriate one from the adjoining drop-down list.

6. WeblogicClick 'Next' to display the screen below.

Name	Value
Admin IP	10.10.10.10
Admin Port	1111
Admin Username	<user_name>
Server Admin Password	*****

7. Specify the following details:

Admin IP

By default it will display local host and user can not edit it.

Admin Port

Specify port number of weblogic server.

Admin UserName

Specify the appropriate admin username of the weblogic application server.

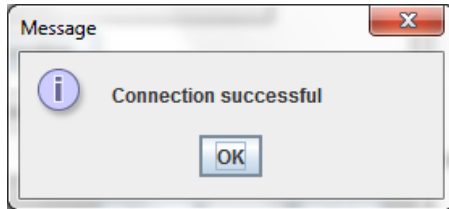
Admin Password

Specify the appropriate admin password of the weblogic application server.

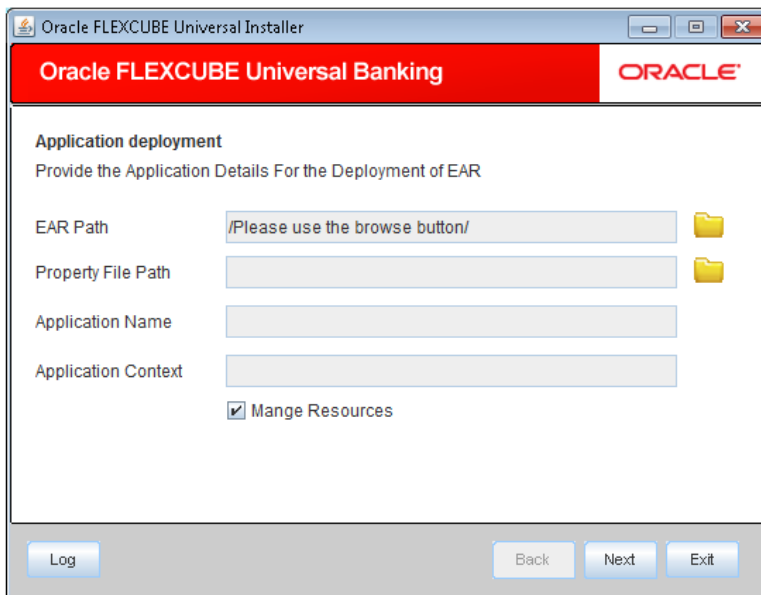
Type of Deployment

Select 'Full Deployment'.

- Click 'Test Connection' to test the connection with the application server. On successful connection, the following message will be displayed.




- Click 'OK' and click 'Next' to display the screen below.



- Specify the following details

EAR Path

Select the application EAR to be deployed using the browse button.

 The Application EAR path cannot be copied and pasted on to the text box, thereby demanding the use of the browse button to select the EAR.

Property File Path

If the property file is internal to the application EAR, it gets displayed here on selection of EAR path. If the property file is external, specify the location. You can use the directory browser and select the directory.

Application Name

Application name gets displayed on selection of EAR path.

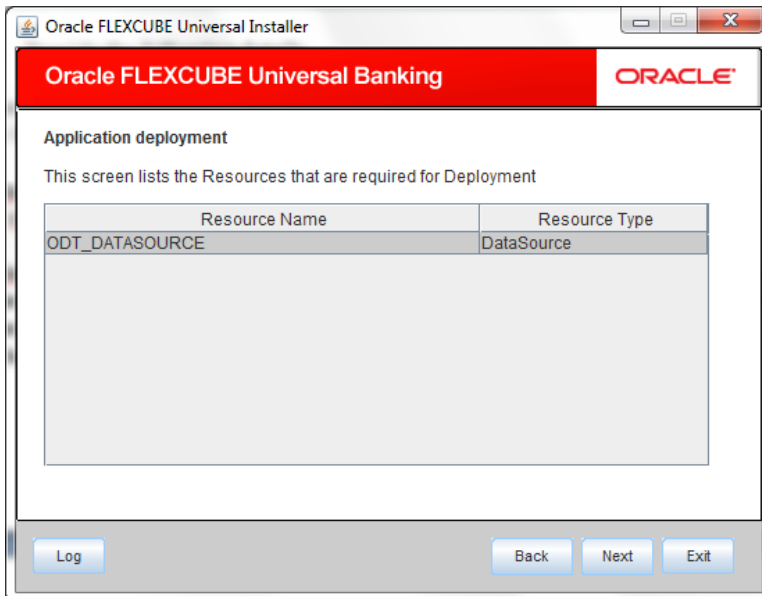
Application Context

Application context gets displayed on selection of EAR path.

Manage Resources

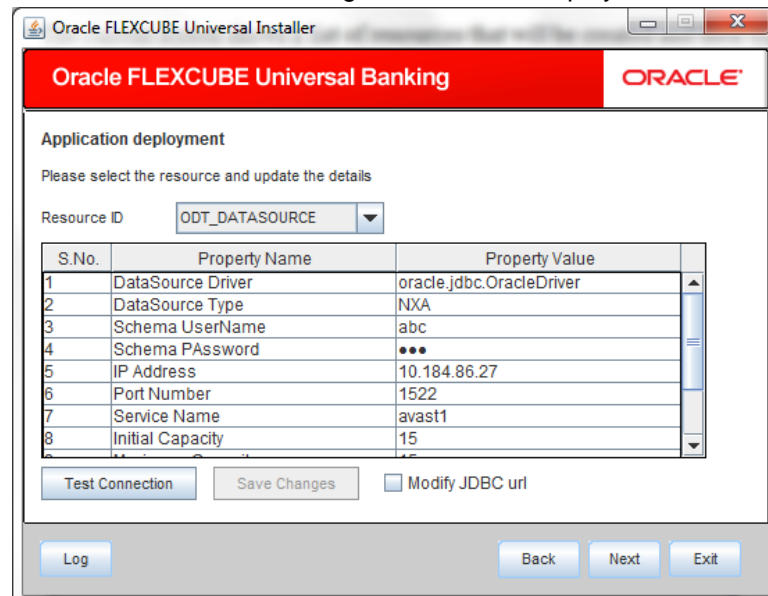
Check this box if resources are to be created along with deployment.

11. Click on 'Next' to display the screen below.



The current screen shows a list and type of resources that are created..

12. Click 'Next'. The following screen will be displayed



13. Specify the following details

Resource ID

Select the data source needs to get created from the adjoining drop down list.

DataSource Driver

Specify the JDBC driver URL with which the connection is established.
Ex: oracle.jdbc.OracleDriver for Non-XA datasources

DataSource Type

Specify the type of datasource that is to be created, XA or Non-XA.

Schema Username

Specify the username of the schema to which the connection is established.

Schema Paasword

Specify the password of the schema.

IP Address:

Specify to provide the host address of the schema.

Port Number

Specify the port number of schema.

Service Name

Specify the schema name.

Initial Capacity

The number of physical connections to create when creating the connection pool in the data source

Maximum Capacity

The maximum number of physical connections that this connection pool can contain.

Capacity Increment

The increment by which this JDBC connection pool's capacity is expanded.

Shrink Frequency

The number of seconds to wait before shrinking a connection pool that has incrementally increased to meet demand.

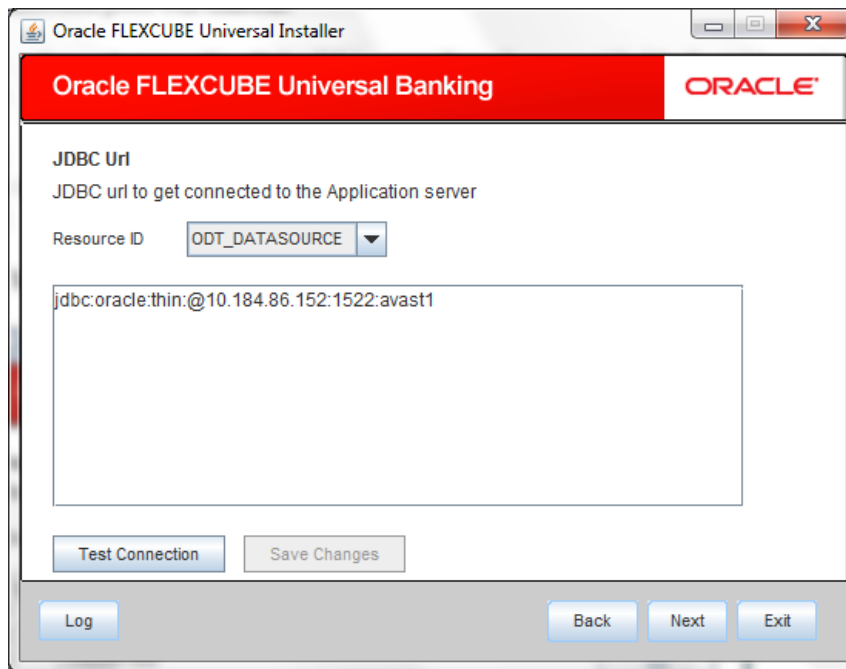
Connection Reserve Timeout

The number of seconds after which a call to reserve a connection from the connection pool will timeout.

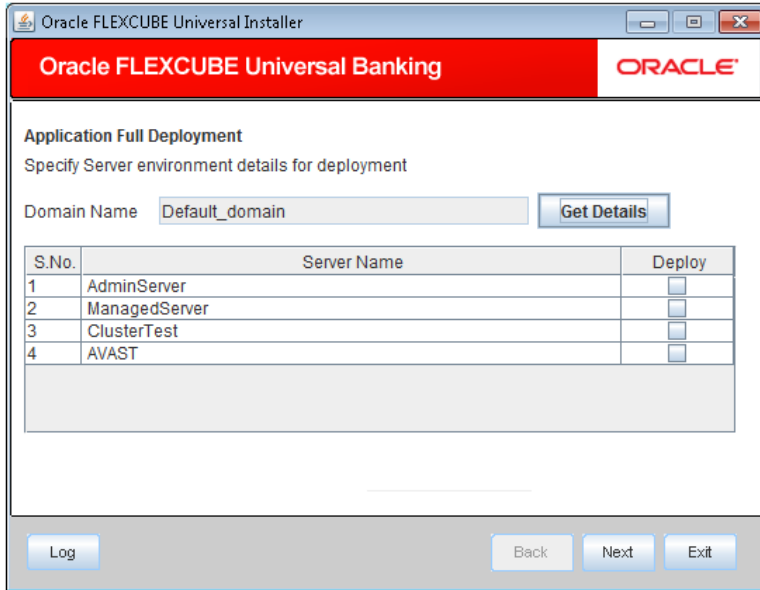
14. Click 'Save Changes' to save the values provided In the table against corresponding value of Resource ID.
15. Click 'Test Connection' to try to establish connection with required details provided in the table.
16. Click on 'Next' to get the following screen.

Modify JDBC URL

17. Select 'Modify JDBC URL' for editing the generated URL.
18. If 'Modify JDBC URL' is selected, on click of 'Next' , the following screen will be displayed.



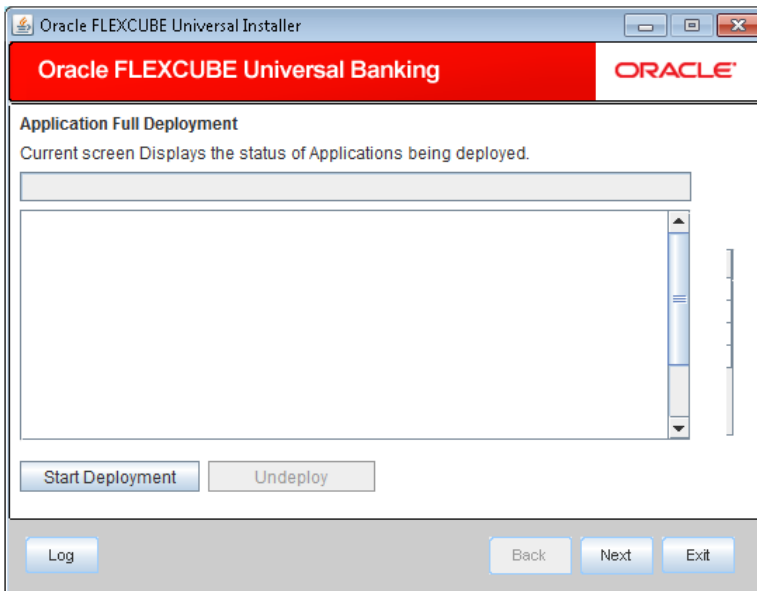
19. Click 'Next', the following screen will be displayed.



20. The Domain Name shows the weblogic domains name.

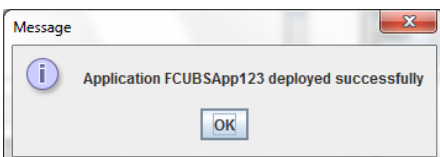
21. Click 'Get Details', the list of available servers are displayed in the table. Atleast one server should be selected to proceed to next screen.

22. Click 'Next' to display the screen below.

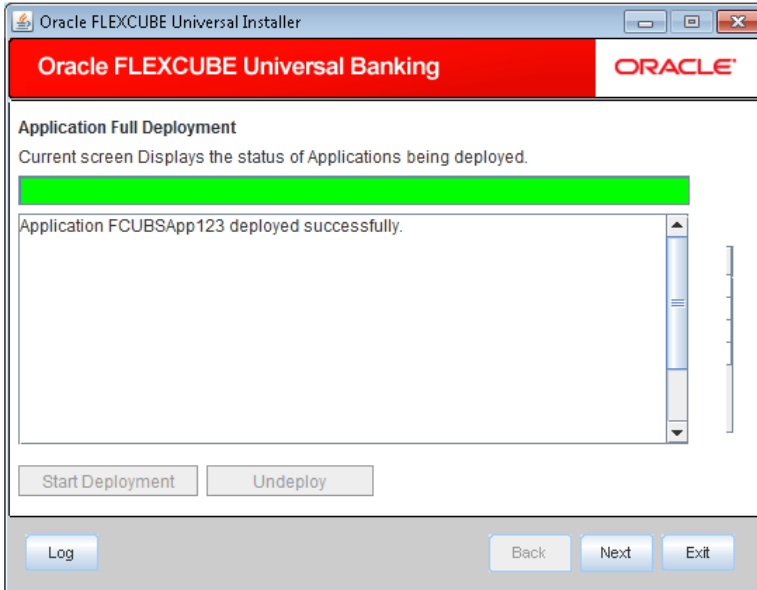


23. Click 'Start Deployment' to begin the process of application deployment.

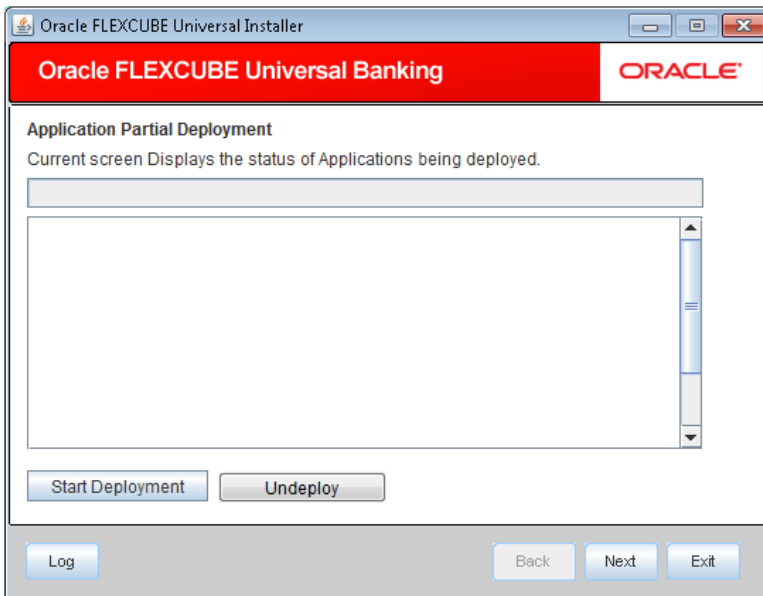
On successful deployment, you will get the following message and the screen is expected to look like below.



24. Click 'OK' and the following screen is displayed:



25. If the deployment is not successful, the 'Undeploy' button will be enabled.



26. Click 'Undeploy' for undeploying the partially deployed EAR from the server.



Open Development Tool Application Deployment in Weblogic
[May] [2019]
Version 14.3.0.0.0

Oracle Financial Services Software Limited
Oracle Park
Off Western Express Highway
Goregaon (East)
Mumbai, Maharashtra 400 063
India

Worldwide Inquiries:
Phone: +91 22 6718 3000
Fax: +91 22 6718 3001
<https://www.oracle.com/industries/financial-services/index.html>

Copyright © [2007], [2019], Oracle and/or its affiliates. All rights reserved.

Oracle and Java are registered trademarks of Oracle and/or its affiliates. Other names may be trademarks of their respective owners.

U.S. GOVERNMENT END USERS: Oracle programs, including any operating system, integrated software, any programs installed on the hardware, and/or documentation, delivered to U.S. Government end users are "commercial computer software" pursuant to the applicable Federal Acquisition Regulation and agency-specific supplemental regulations. As such, use, duplication, disclosure, modification, and adaptation of the programs, including any operating system, integrated software, any programs installed on the hardware, and/or documentation, shall be subject to license terms and license restrictions applicable to the programs. No other rights are granted to the U.S. Government.

This software or hardware is developed for general use in a variety of information management applications. It is not developed or intended for use in any inherently dangerous applications, including applications that may create a risk of personal injury. If you use this software or hardware in dangerous applications, then you shall be responsible to take all appropriate failsafe, backup, redundancy, and other measures to ensure its safe use. Oracle Corporation and its affiliates disclaim any liability for any damages caused by use of this software or hardware in dangerous applications.

This software and related documentation are provided under a license agreement containing restrictions on use and disclosure and are protected by intellectual property laws. Except as expressly permitted in your license agreement or allowed by law, you may not use, copy, reproduce, translate, broadcast, modify, license, transmit, distribute, exhibit, perform, publish or display any part, in any form, or by any means. Reverse engineering, disassembly, or decompilation of this software, unless required by law for interoperability, is prohibited.

The information contained herein is subject to change without notice and is not warranted to be error-free. If you find any errors, please report them to us in writing.

This software or hardware and documentation may provide access to or information on content, products and services from third parties. Oracle Corporation and its affiliates are not responsible for and expressly disclaim all warranties of any kind with respect to third-party content, products, and services. Oracle Corporation and its affiliates will not be responsible for any loss, costs, or damages incurred due to your access to or use of third-party content, products, or services.